

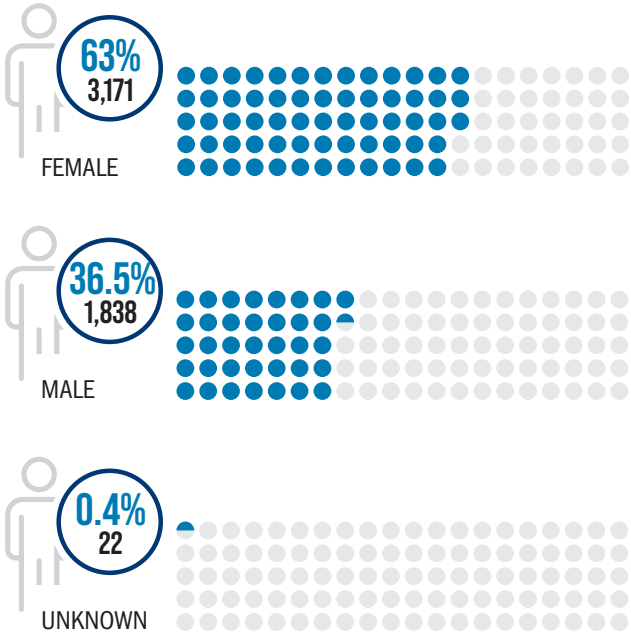
# UNDERGRADUATE STUDENT SNAPSHOT

FALL 2025

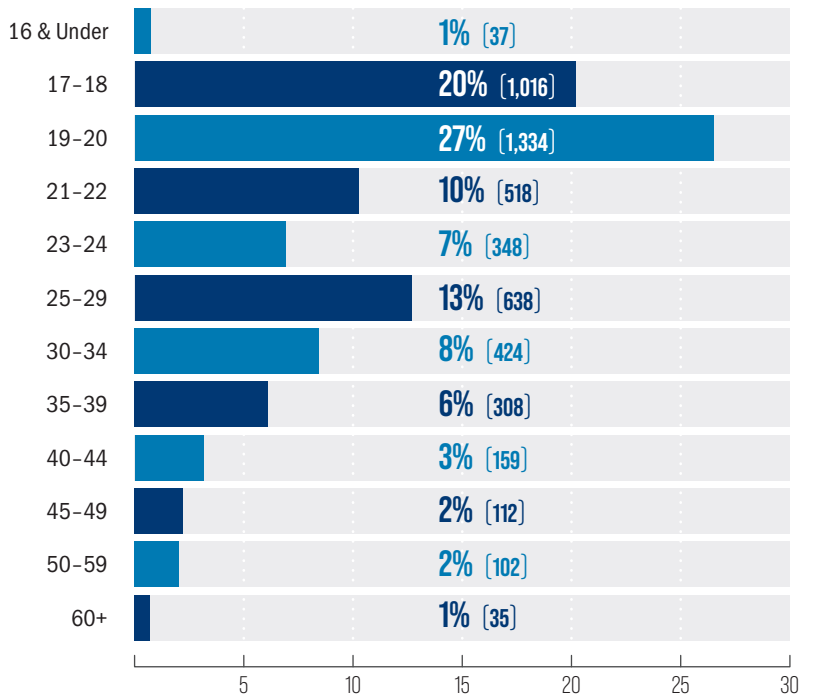
These figures represent the diverse array of our 5,031 students who were enrolled as of August 1, 2025.



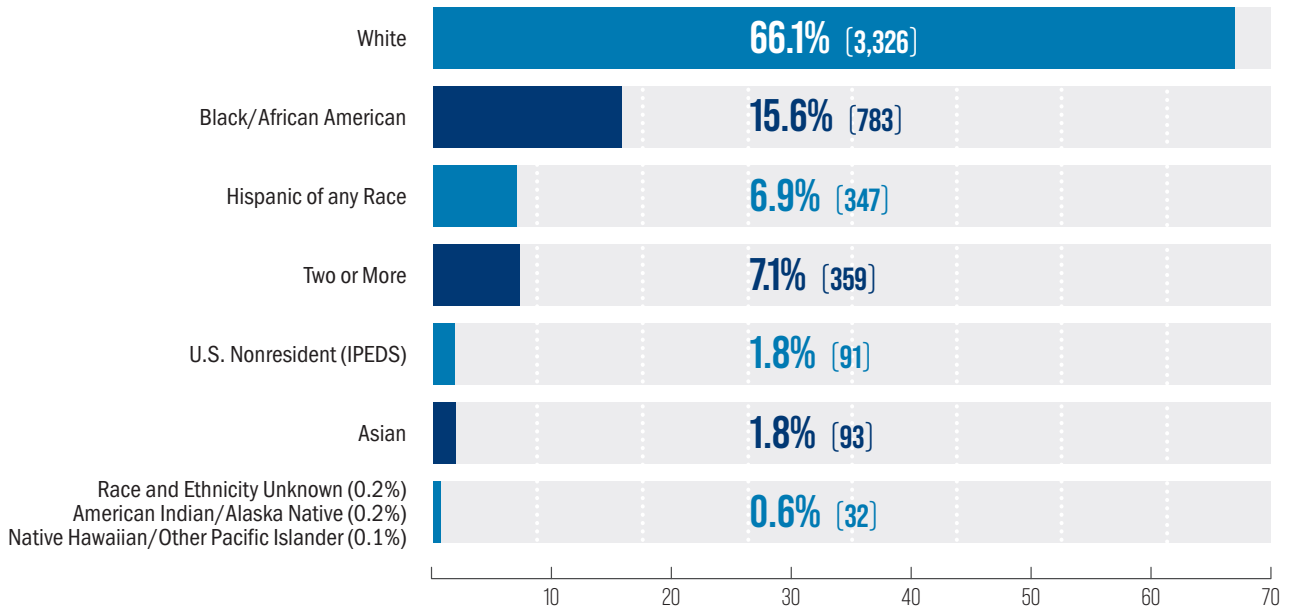
### ENROLLMENT BY GENDER



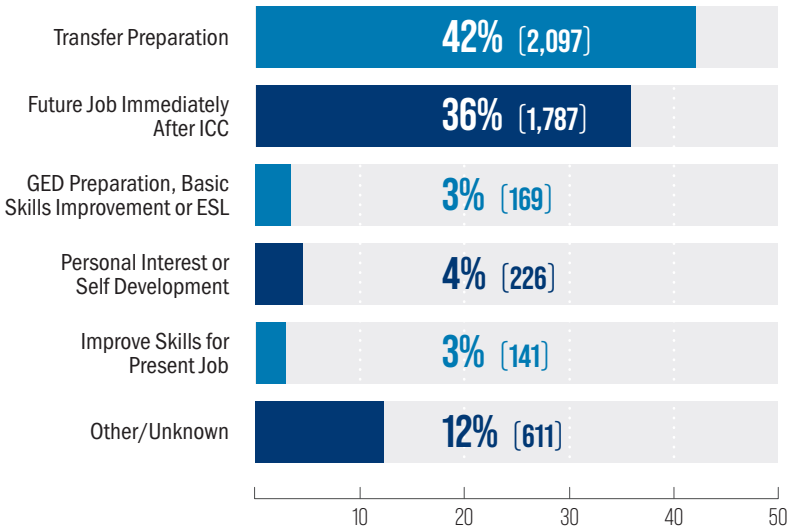
### ENROLLMENT BY AGE



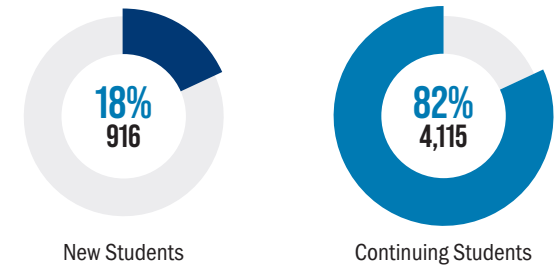
### ENROLLMENT BY RACE/ETHNICITY



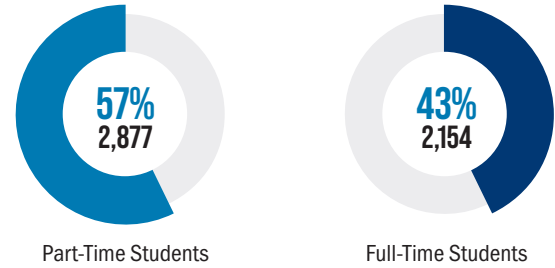
## ENROLLMENT BY EXPECTED OUTCOME



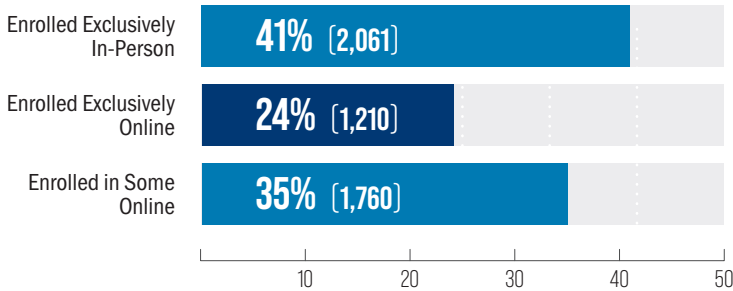
## NEW VS. CONTINUING ENROLLMENT



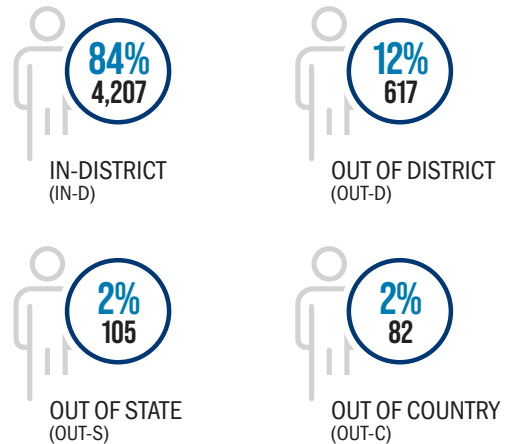
## ENROLLMENT BY INTENSITY



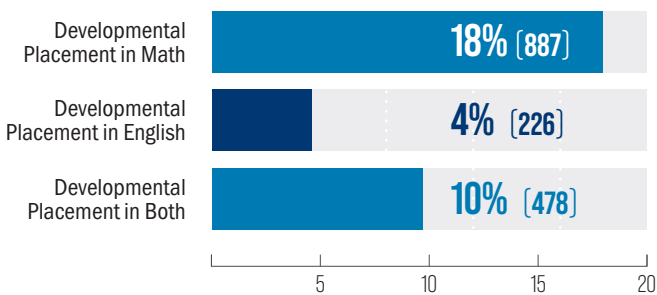
## ENROLLMENT BY MODALITY



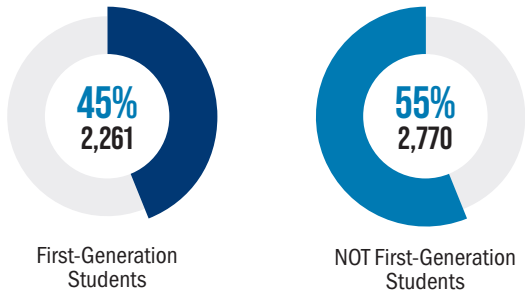
## ENROLLMENT BY RESIDENCY



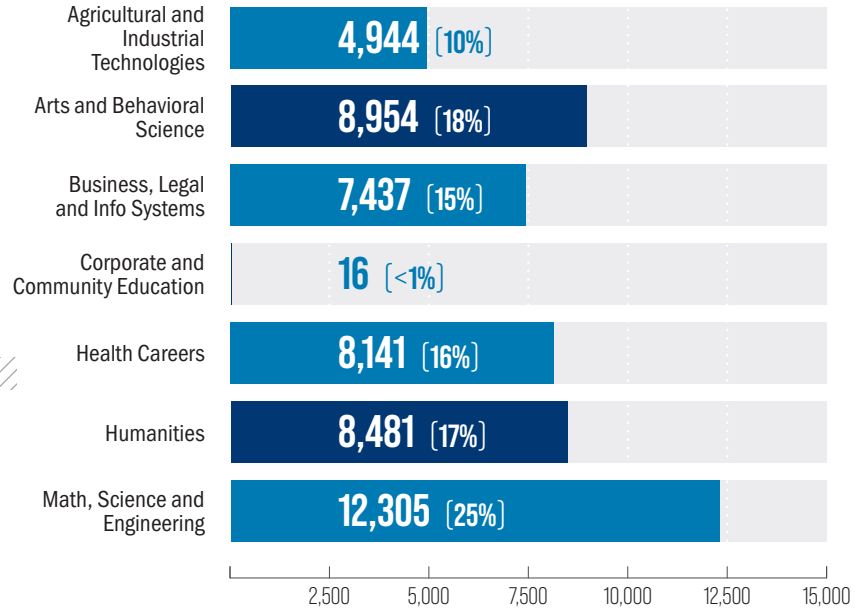
## ENROLLMENT IN DEVELOPMENTAL COURSES



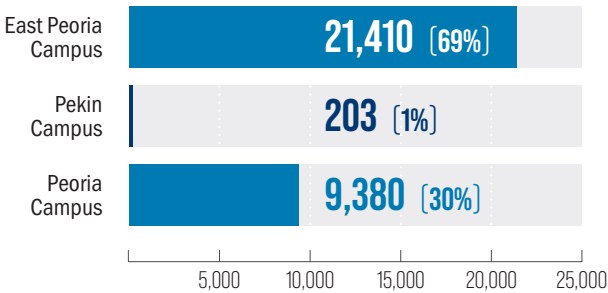
## FIRST-GENERATION STUDENT ENROLLMENT



## CREDIT HOURS BY ACADEMIC ORGANIZATION

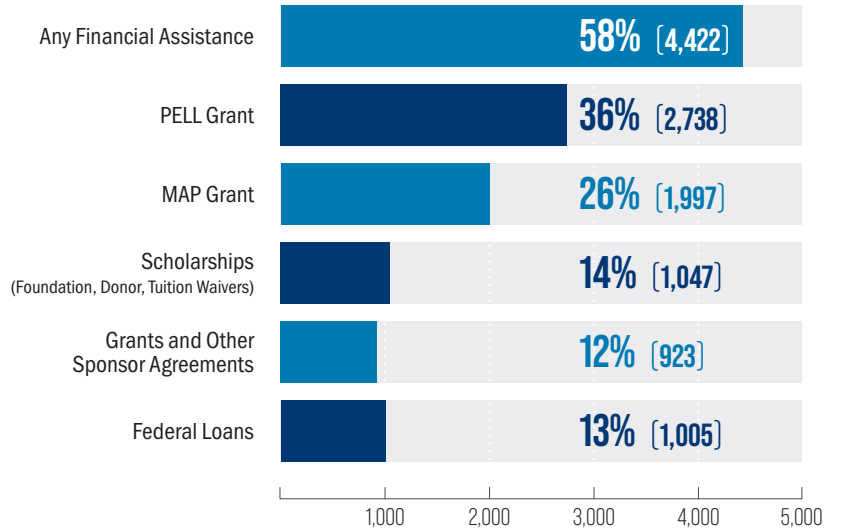


## CREDIT HOURS BY CAMPUS

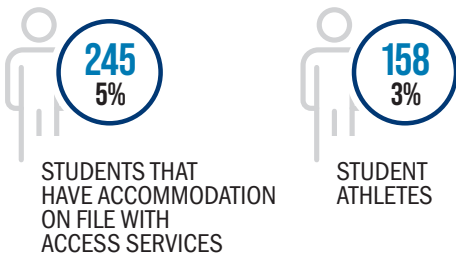


## PERCENT OF STUDENTS RECEIVING FINANCIAL ASSISTANCE

(This data reflects the 7,685 undergraduate students enrolled in Fall 2024, Spring 2025, and Summer 2025)



## OTHER STUDENT DATA



### Sources:

ICC Institutional Research Fall 2025;  
 Rachel Pace, Director, Implementation & Integration;  
 Rob Buss, Director, Athletics;  
 Kyle Rindfleisch, Director, Financial Aid  
 Chris Brown, Manager, Student Financial Services;  
 SQL data warehouse - Dim Student Table

1 College Drive, East Peoria, IL 61635-0001  
 icc.edu | (309) 694-5200

