

INTRODUCTION

The District Profile

Illinois Central College (ICC) is one of 48 community colleges within 39 community college districts in Illinois. Illinois Central College District 514, a single college district, includes a geographic area that encompasses all or part of ten counties. With a district size of 2,322 square miles, Illinois Central College District 514 ranks as the seventh largest community college district in the state. The district is diverse, ranging from the activity and commerce of downtown Peoria and the world headquarters of Caterpillar, Inc., to the openness and tranquility of central Illinois farm country in Woodford County. The Peoria Metropolitan Statistical area (MSA) is home to over 347,000 people and is nearly equidistant from Chicago, St. Louis, and Indianapolis.

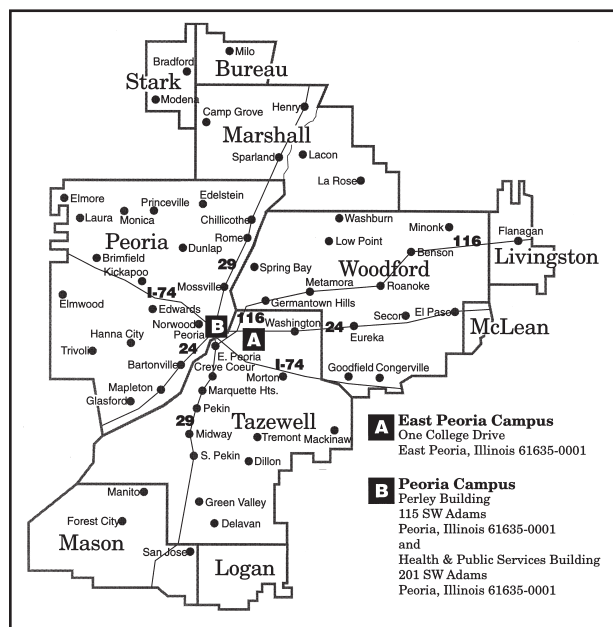
In the July 10, 2000 *Community College Week*, an independent publication serving community, junior, and technical colleges, Illinois Central College was listed as the 40th highest producer of associate degrees in the nation in the 1997-1998 academic year. This placed Illinois Central College in the top 3.5% of associate degree producers. The College produced more associate degrees than all but one, College of DuPage, of the Illinois community colleges. Illinois Central College was also recognized as a Top 100 producer of certificates, ranking 81st out of 1,132 colleges, placing Illinois Central College in the top 7% of certificate producers nationwide.

Historical Perspectives

Illinois Central College is a comprehensive community college. Established in 1966 under the Illinois Public Community College Act, Illinois Central College was formed to meet the post-secondary educational needs of the newly formed Community College District 514. The goals of the College were, and are, to provide programs for transfer to baccalaureate programs, occupational and vocational programs in business and industry, basic studies programs for students in need of acquiring skills for success, and continuing education programs for lifelong learning.

Since opening its doors in 1967 in temporary buildings at its present location in East Peoria, Illinois Central College has awarded over 37,000 degrees and certificates to graduates. Furthermore, since its humble beginnings, the College has responded to enrollment growth and community need by building several permanent buildings on the East Peoria Campus. Illinois Central College first established a presence in downtown Peoria in 1973 in response to the needs of people working in that area. In 1985, and again in 1995, the College purchased and renovated a building in the heart of Peoria to serve the educational needs of its students more appropriately. In addition, Illinois Central College offers both credit and noncredit classes in more than 30 locations throughout the district under the Neighborhood College program.

Illinois Central College has touched the lives of more than 400,000 attendees through its various programs, including traditional college classes, community education classes, General Education Development (GED) classes, and the Professional Development Institute. Research indicates that more than 43% of college-bound high school seniors in the district attend Illinois Central College in their first semester following high school graduation. Additionally, more than 50% attend Illinois Central College for one or more classes in their first few years out of high school.



Student Profile

A total of 27,471 students were enrolled at Illinois Central College in the 2000-2001 academic year with 19,007 credit-seeking students and 8,464 noncredit-seeking students. The table below shows the fall semester enrollment trends from 1992-1993 through 2001-2002. As the table shows, the College has experienced a pattern of declining enrollment since 1991. During this ten-year period, the enrollment has decreased 10% from 13,056 to 11,764 students. The average fall semester credit student headcount for the listed period is 11,758.

Typically, students live in the surrounding communities and commute to class. The median age of students enrolled Fall Semester 2000 was 25 years, and the average age was 29 years. Declining population demographics and high employment rates throughout the district appear to have contributed to some shift in enrollment demographics, most noticeably the loss of students in the 30-49 age range. The student gender distribution has remained fairly static over time at 55% female and 45% male.

Enrollment Trends Fall Semester*

Year	Full-time	Part-time	Total	FTE
1992	4,197	8,859	13,056	6,669
1993	4,206	8,091	12,297	6,487
1994	4,033	7,663	11,696	6,208
1995	3,869	7,970	11,839	6,141
1996	4,036	7,484	11,520	6,145
1997	4,196	7,528	11,724	6,373
1998	4,217	7,269	11,486	6,301
1999	4,131	7,013	11,144	6,140
2000	4,054	6,999	11,053	6,092
2001	4,183	7,581	11,764	6,221

* Credit students only

Accreditation History

In spring 1968, Illinois Central College District 514 began the process of seeking accreditation from the North Central Association of Colleges and Secondary Schools. Illinois Central College was granted "Recognized Candidate" status in March 1971 with full accreditation as an associate degree-granting institution in February 1972. Continued accreditation was granted following the March 1982 team visit, and the next comprehensive evaluation was scheduled for 1991-1992.

The 1992 Self-Study began during the fall of 1990 with selection of members for 12 working committees. After submittal of a Self-Study Report and a team visit in April 1992, the College was granted a ten-year continued accreditation. As stated in the 1992 team report, "The best predictor of future performance is past performance. Illinois Central College has demonstrated an ability to act upon findings from past institutional self-studies and evaluation team reports. The College has responded well to changing community needs. We have every reason to believe they will repeat past exemplary practices" (page 33). Subsequently, the next scheduled comprehensive evaluation by an on-site team was scheduled for 2001-2002.

Purposes of the Self-Study

Illinois Central College holds the belief that the purpose of the Self-Study is to strengthen the College through better self-awareness. The Self-Study revealed the College's many strengths and opportunities, while disclosing areas in need of improvement. Only through a process of regular self-analysis can the College continue to grow and meet the needs of the community.

The Self-Study evaluated the state of the College, outlined its accomplishments, and enabled the College to chart its course for the future. It has also become a useful tool to showcase the strengths of the institution that they might be built upon and highlight the weaknesses and challenges that they might be addressed and strengthened. As higher education develops and evolves along with the economic, cultural, and technological areas of society, the needs of the population change. While some of this change is evident, much of it must be anticipated. Therefore, the College must be poised, agile, and ready to respond.

The objectives for the self-study were to:

- Examine the programs and courses offered, locating the strengths, weaknesses, and challenges.
- Provide recommendations for meeting challenges and addressing weaknesses.
- Grow in understanding of and commitment to our diverse offerings.
- Respond to the changing needs of our community.
- Participate in continual evaluation and renewal.
- Strengthen our communications with and services to individuals and the community at large.
- Demonstrate that the College meets the criteria of the North Central Association for continued institutional accreditation.

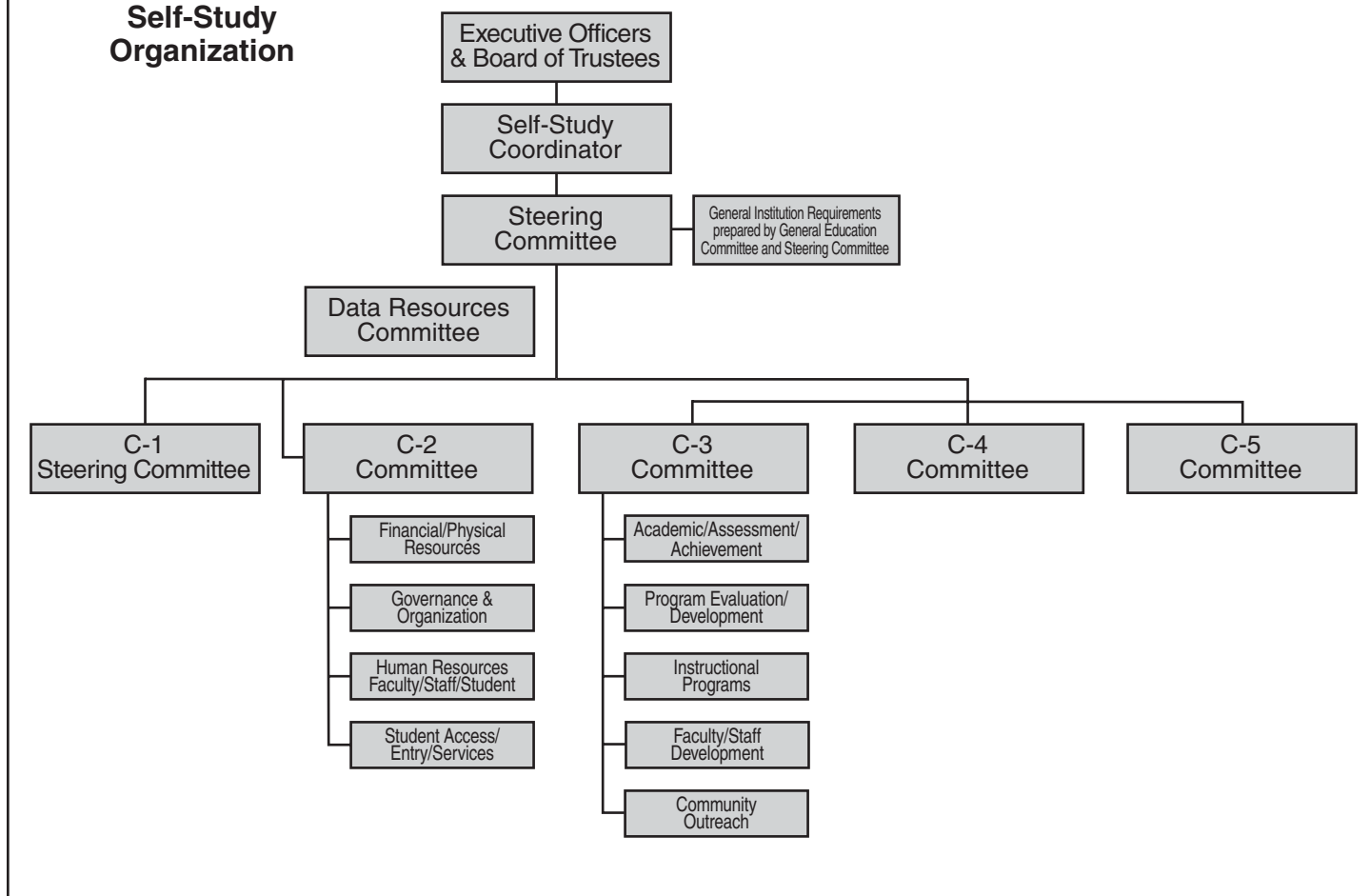
The Self-Study Process

The current North Central Self-Study began during Fall Semester 1999 with the appointment of a Basic Studies faculty member as the self-study coordinator. During Spring Semester 2000, a 16-member Steering Committee representing all areas of the College was chosen. The Steering Committee was charged with providing leadership and direction for the Study. From March through August 2000, a Self-Study Plan, organized around the Five Criteria, was developed.

Committees were organized within the criteria for accreditation. Each committee was assigned a steering committee member as a liaison. In this way the duplication of tasks was minimized.

During orientation week in August, "kick-off" activities were conducted with everyone at the College being encouraged to participate. Student organizations were asked to encourage students to volunteer for committee service. By November 2000, 13 committees were fully formed and busily gathering data to fulfill the charge given to each. Each committee prepared a report summarizing its findings and recommendations. Copies of these reports were placed on reserve in the library so that all who wished could review them. These documents also served as the background documents used in preparation of the Self-Study Report.

The Self-Study draft was made available for review by the faculty members, staff, administration, students, and community members. The final document was then prepared for the team assigned to visit Illinois Central College on April 15-17, 2002.

**2000-2002
North Central
Self-Study
Organization**

See Committee Membership listing on next page.

ILLINOIS CENTRAL COLLEGE NORTH CENTRAL COMMITTEE MEMBERSHIP

Self-Study Coordinator – Carol Nelson

CRITERION ONE AND STEERING

Carol Nelson*+	Helen Krause+	Tom Pilat+
Bob Moulton+	Ralph Ostrowski+	John Wyant+
Guy Aylward†	Bettsey Barhorst†	Rita Fischbach†
Ellen George†	Ruth Oleson†	Ken Williams†
Becky Houghton ^Δ	Jeanne Metros ◊	Donna Thomas ◊
Eric Ockerhausen ^Ø	Ed Herrmann+	

CRITERION TWO

Financial/Physical Resources

Doug Peterson*+	Chris Cox+	David Keys+
John Jabusch†	Emil Haeflinger†	Bruce Roberts ^Δ
Sue Sinclair ^Δ	Jan Busche ◊	Dennis Paluska ^Ø
	Khoa Ngo**	

Governance and Organization

William Feipel+	Maxine Cordell-Brunton+	Tom Higgins*+
Kevin Thomas+	Robert Wegner†	Lanny Spanninger†
Tom Eertmoed* ^Δ	Bill Crawley ^Δ	Emy Landers ^Δ
	Jared Leifeld**	

Human Resources

Diane White+	Val Moore+	Shawna Wallis+
Mike Foster+	Jim Sullivan+	Joe Stien+
Joanne Bannon*†	Sharon Gilbert ^Δ	Tony Wysinger ^Δ
Pat Vietti* ^Δ	Nikisha Wright-Anderson ^Δ	Lou Ann Mathews ◊
Joanne Lee ◊	Paul Rudloff**	Jackie Holmes**

Student Access/Entry/Services

Dorothy Dean+	Janice Kinsinger+	Liane Bisanz+
John Beaupre+	Gail Thigpen+	Troy Halvorsen+
Jo Ann Clark+	John Avendano*†	Beverly Brucks ^Δ
Sue Mahoney ^Δ	Marcia Bolden ^Δ	Cindy Wegner ◊
Susan Irwin+	Travis Riekana**	Joshua Bunch**

CRITERION THREE**Academic Assessment/Achievement**

Kip Strasma+	Bonnie Murphy+	Amy Milford+
Carolyn Lighter*+	Phyllis Beck+	Curt Dunkel+
Jack Teal*†	Judy Jurgens†	Pat Pope ^Δ
	Pat Pussey ^Δ	

Program Evaluation/Development

Donna Augustyn-Sloan+	Clara Groeper+	Paulette Sibrel+
Kelly Crawford-Jones+	Elizabeth Carrico*+	Prince Dorough+
Ken Eckstein+	Michael Sloan*†	Kent Collins†
Heather Thomas ^Δ	Shirley McQuirter ^Δ	Terri Keys ◊

Instructional Programs

Dave Kobilka+	Mark DuBois+	Ronald Kirkwood+
Roger Herriman*+	Barb Thomas+	Katherine Salch+
April Tatham+	Ron Holohan†	Scott Dunham*†
Pam Wilfinger ^Δ	Jennifer Miller ^Δ	Colleen Petersen ◊

Faculty/Staff Development

Ruth Briggs+	Edwina Jordan+	Jill Wright+
Colleen Ensley+	Jean Holmes+	Man Hong Siu+
Kim Cioni+	Deborah Carver*†	Kay Sutton†
Susan Grebner ^Δ	John Vogelsang ^Δ	Kenna Diveley*
	Tom Braun ^Ø	

Community Outreach

Mary Foster+	Keli Wagner+	Barbara Gingell-Farris+
Ed Stermer*+	Wendee Guth+	Mary Beth Kiefner+
Robert Webb+	Jimmie Moore*†	Charles Randle†
Bev Evans ^Δ	Pam Irwin ^Δ	Julia K. Myers**

CRITERION FOUR

Eric Christian*+	Kenneth Mellendorf+	Don Jenkins+
David Thompson+	Gladys Mathes+	John Armon+
Lynn Mauer+	Joe Pitlik+	Vicky Stewart*†
Jeffrey Hoover†	Amy Sajko ^Δ	Leah Leas**

CRITERION FIVE

Mike Dant+
Marty Potts+
Jerry Jarboe+
Todd Stark**

Rick Becker*+
Minta Colburn+
Margaret Swanson*†
Guy Aylward†

Joan Stokowski+
James Pearce+
Larissa Moebis^Δ

GENERAL EDUCATION

Angelo DeFranco+
Steve Larson+
Tom Pilat+
Randey Wall+
John Avendano†

Gary Hale+
Jaclyn LeFebvre+
Kip Strasma+
Ken Williams†
Pam Wilfinger^Δ

Janice Kinsinger+
James Thomas+
Margot Vance+
Rita Fischbach*†

- * Indicates Chair
- ** Indicates Student
- † Administration
- ^Δ Professional/Supervisory/Support
- ∅ Union
- ◇ Classified
- + Faculty

